



RIGHT TO PLAY
PROTECT. EDUCATE. EMPOWER.

How We Are Making a Difference Together

Financial Transparency and Accountability Q&A
based on 2021 Audited Financials

Date: August 2022



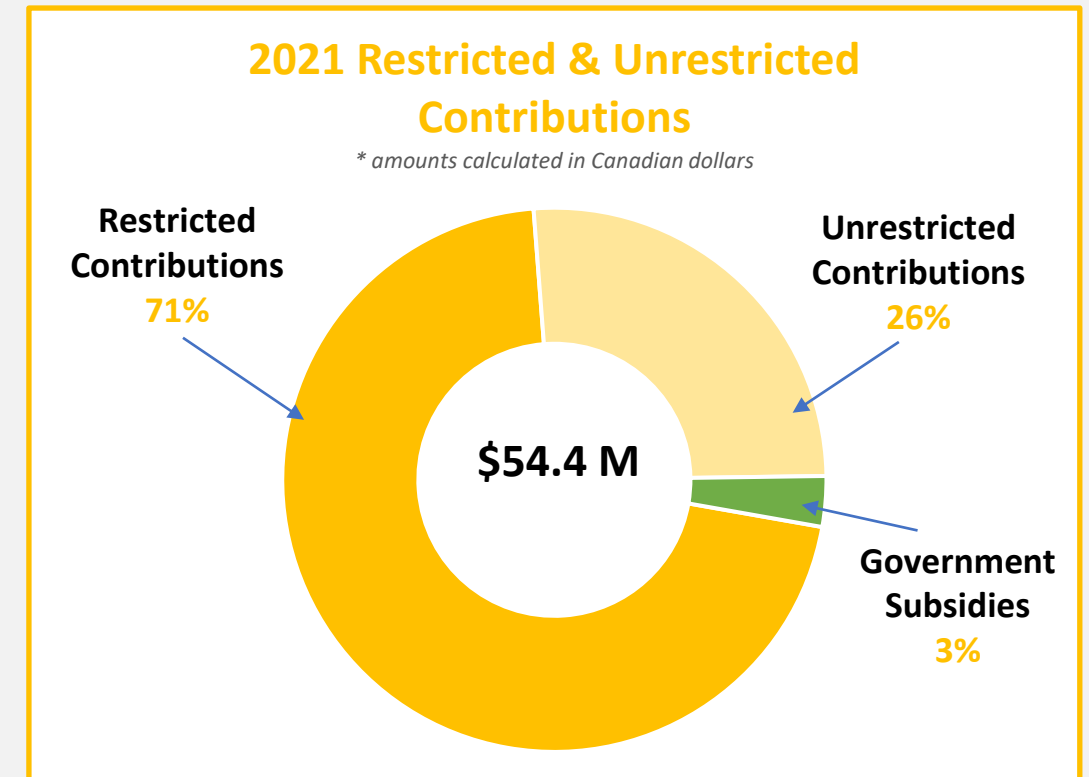
What types of contributions does RTP receive?

Right To Play receives contributions in cash and in-kind (donations of goods and services).

Our cash revenues are divided into **restricted** and **unrestricted** funds.

- **Restricted** funds are designated for a particular project, country or area of intervention, as agreed with the donor. Restricted contributions are essential for Right To Play since they fund most of our programs. They often originate as grants from governments, foundations, and UN agencies.
- **Unrestricted** funds are supporting the implementation of our strategic goals without being specifically designated to a particular use. They are critical for Right To Play to fulfill its mission. Unrestricted funds are allocated where the need is greatest, covering strategic investments, program funding gaps and operational costs. They primarily consist of individual and corporate donations and revenue from fundraising events.

The December 31, 2021 year-end breakdown of **restricted** and **unrestricted** funding was:



1 Audited Financial Statements- Consolidated Statement of Operations. 2021. P4. https://righttoplaydiag107.blob.core.windows.net/rtp-media/documents/Right_To_Play_International_12312021_Final_FS.pdf

Government subsidies received in 2021 were also unrestricted funds. However, as they are an exceptional fundraising stream given the COVID-19 context in 2021, they have been kept separate from the usual unrestricted revenues.



Where do the funds go?

All funds received support our mission to **protect, educate and empower children to rise above adversity using the power of play.**

85% of funds received are used to implement our programs, while **15%** is used to cover non-program costs, which include fundraising and administrative costs. This equals the industry's average.

2021 Financial Distribution

** amounts calculated in Canadian dollars*

Program Costs

85%

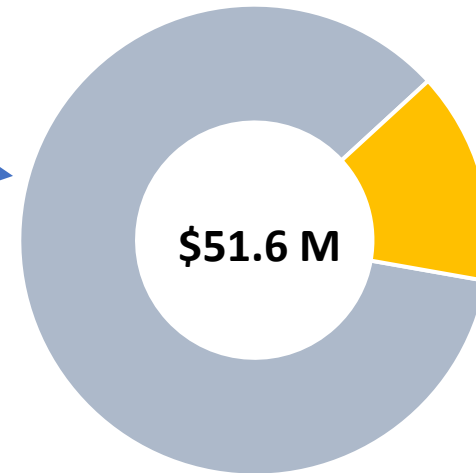


Non-Program Costs

15%



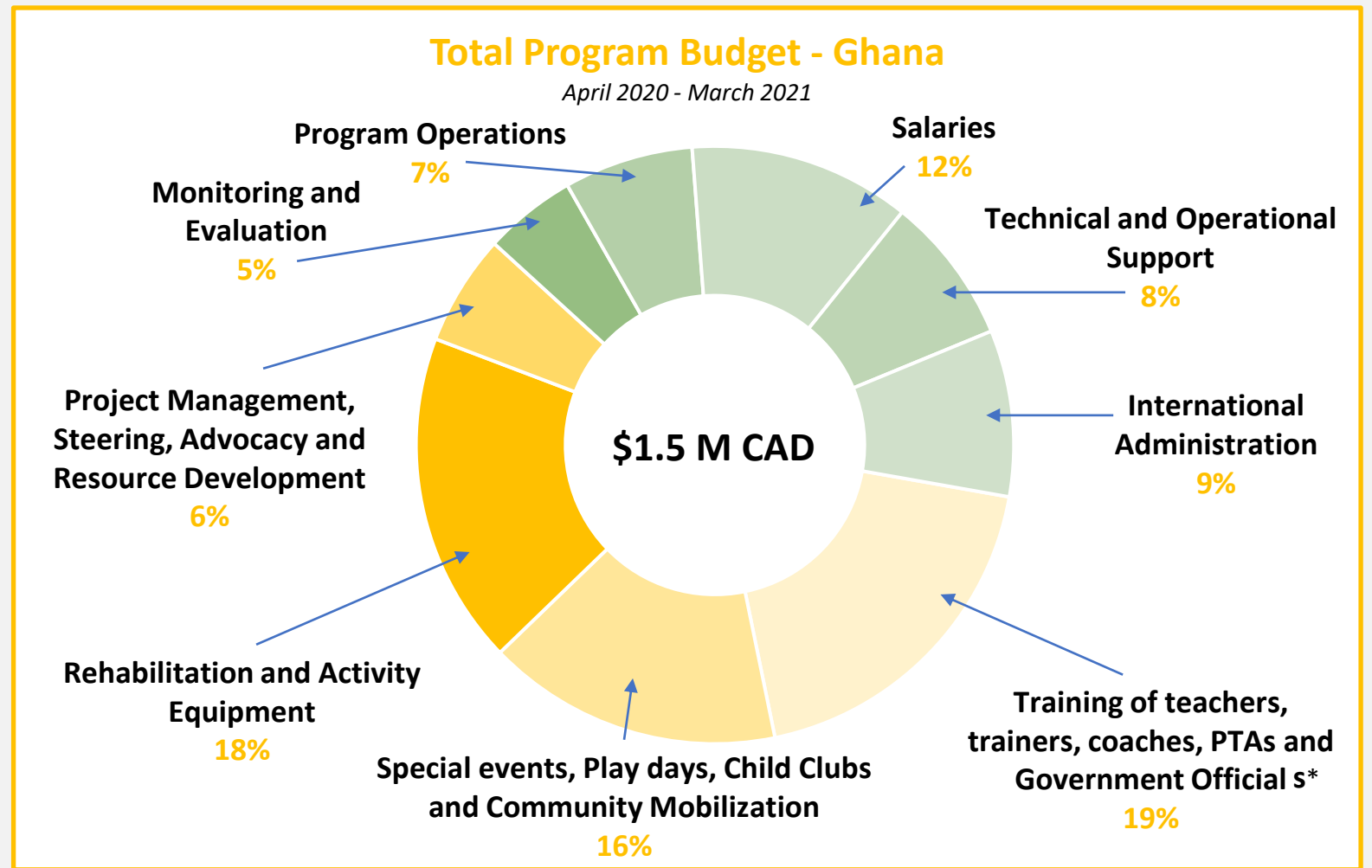
\$51.6 M



Example of a breakdown of program costs

Right To Play runs a variety of programs in the 15 countries where we have program offices. Costs vary, and depend on context, objectives, partners and phases.

This is an example of the annual costs of a Right To Play program in **Ghana**. It is a five-year program that uses play-based learning to remove barriers to education, especially for girls, and to build teacher capacity to improve learning outcomes.

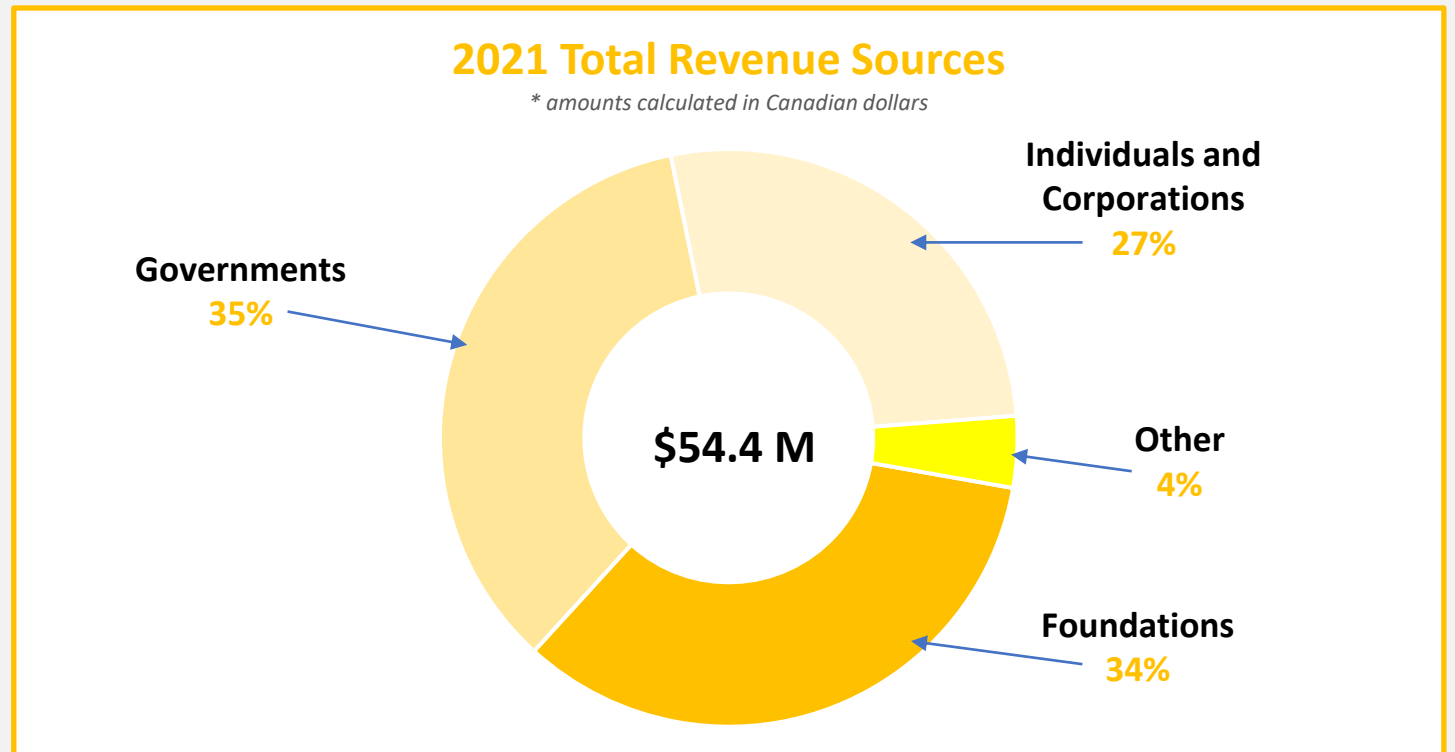


* PTAs refer to Parent-Teacher Associations



Where do the funds come from?

For the audited year ending on December 31, 2021, the breakdown of revenue sources was as follows:



Annual Report, 2021. P 5. https://righttoplaydiag107.blob.core.windows.net/rtp-media/documents/Right_To_Play_2021_Annual_Report.pdf

"Governments" includes \$1,775,536 in government subsidies received in 2021. See Audited Financial Statements- Consolidated Statement of Operations. 2021. P4. https://righttoplaydiag107.blob.core.windows.net/rtp-media/documents/Right_To_Play_International_12312021_Final_FS.pdf

Right To Play - Organisational Structure

Right To Play is a global organization that consists of various entities that jointly deliver on our mission.

15 Country Offices with local staff who are responsible for direct program implementation, building partnerships that support implementation, and working to institutionalize our work locally, and nationally.

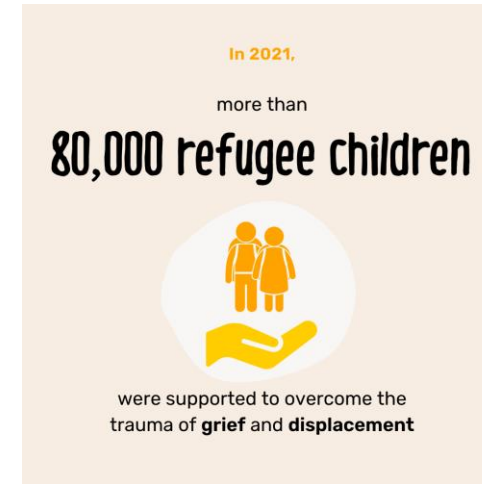
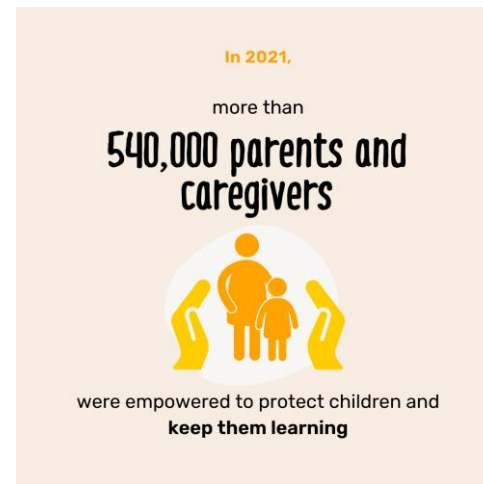
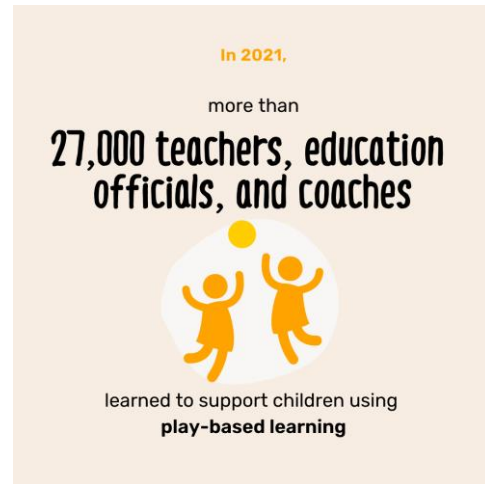
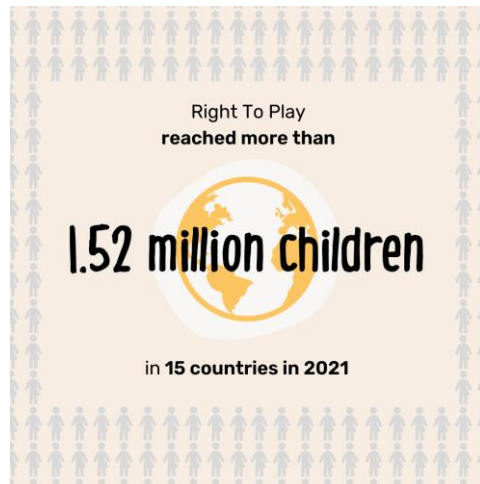
8 National Offices in Europe and North America with local staff who are responsible for fundraising, the management of global program partnerships, and thought leadership.

Global Headquarters in Toronto, Canada and London, UK, responsible for the Global Strategic Plan, organizational policies, standards, systems and support, and managing consolidate global reporting and restricted grants from global partners.

To optimize results and minimize overlap, redundancy and bottlenecks, the organization has an accountability chain with clear roles and responsibilities between offices that facilitate effective and efficient program management.

Select 2021 reach and impact

Every year, we measure how many children, education professionals, and parents and caregivers we reach through our programs.



We also regularly conduct program evaluations to better understand the impact our interventions are having on children's lives and well-being, how they are helping educators build new competencies, and how they are encouraging supportive behaviours in parents, caregivers, and communities. These share impact results, such as:

- In Mali, more girls **feel protected** in their communities after participating in Right To Play programs
- In Ghana, 73% of girls in participating **schools read better and faster** thanks to Right To Play programs

We use evaluation learnings to improve program delivery and inform program scaling and systems-level change.

How does Right To Play determine if funds are being used in an effective manner?

Right To Play implements an evidence-driven approach to programming, which includes several key approaches to achieve impactful and sustainable change for our beneficiaries. This includes:



Implementation of **evidence-based practices** in our projects



A robust **Monitoring, Evaluation, and Learning** framework that promote adaptive programming and management



Piloting of new innovations and rigorous assessment before **scaling up** interventions

Independent **external evaluations of the effectiveness and impact of our projects**, and systematically responding to evaluation findings/recommendations for continuous improvement in our projects

How does Right To Play determine if funds are being used in an efficient manner?

Robust financial management, anticorruption and control systems have been developed to provide effective and efficient operations, reliable financial reporting, detection of financial mismanagement, compliance with laws and regulations and systems for safeguarding organisational assets.

Right To Play's anti-corruption and financial management policies and systems include:

- (i) Programme finance policies and standards;
- (ii) Procurement policies;
- (iii) Whistle blower policy;
- (iv) In-field authorisation levels;
- (v) Contract authorisation policy;
- (vi) Anti-terrorism policy; and

(vii) Grant Management and Partner Financials Management Manuals
Core financial and risk management policies and procedures guide the organisation's financial management and anti-corruption efforts, as well as the efforts of our partners.



How does Right To Play ensure integrity?

Right To Play considers integrity a very serious matter.
Our integrity policy in practice consists of three steps:

Prevention

Right To Play actively promotes desirable behaviour, both of employees and other stakeholders. Tools to prevent unethical behaviour include our **international code of conduct**, which applies to all employees, volunteers, interns, consultants and other RTP representatives, our **policies** on specific integrity topics, e.g. our child safeguarding policy, and **training** on those policies as well as periodic internal **discussion** in our teams and boards about integrity in practice.

Detection

Right To Play promotes a healthy work environment and a culture in which everyone feels safe, and able to report inappropriate behaviour. Right To Play set up a **helpline** where violations can be reported anonymously in an accessible manner. All reports are treated **securely and confidentially**.

The Global Leadership team also reports monthly on any identified incidents.

Response

If a report of (alleged) unethical behaviour is received, Right To Play will **investigate, offer assistance** to those involved **and sanction proven misconduct** in an appropriate manner. The investigation is always a multi-step process, carried out with the **greatest care** and includes discussions, reporting, and appropriate measures.

How does Right To Play protect data and privacy?

Right To Play has a Data Protection and Privacy Policy, which is in accordance with its responsibilities under current legislative acts and applicable industry governance programs and best practices. This policy exists to ensure that all staff of Right To Play are informed about their responsibilities for the proper collection of personal data, handling and storage of personal data to ensure the safeguarding of personal information.

For more detail, please refer to the full policy [here](#).





RIGHT TO PLAY

PROTECT. EDUCATE. EMPOWER.

www.righttoplay.com